

# Unlock Personalized Learning with BizAI Job Role Recommendations

BizLibrary has partnered with Lightcast, a leader in labor market data, to bring you skill-based learning tailored to your job role. By selecting a role, you gain access to personalized content recommendations that align with the skills required for career growth.



## Why Set a Job Role?

### Personalized Learning:

Get content recommendations based on real job market skills.

### Career Development:

Build the skills needed to advance in your role.

### Effortless Experience:

No administrator setup required—just set your role and start learning!

## How to Add a Job Role

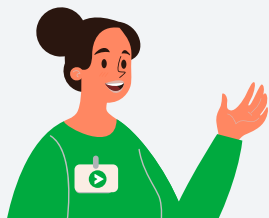


During onboarding, you'll have the option to select a job role from hundreds of choices.



Simply choose your role and start receiving tailored recommendations!

## For Existing Learners:



1. Navigate to My Profile in the platform.
2. A notification will prompt you to add a job role.
3. Click on Learner Preferences and select your job role from the available options.

By leveraging job roles and skill mapping, learners can build competencies for career advancement while organizations drive targeted skill development with minimal effort

**Start your journey to smarter learning today!**